

# Transitory Locations

## 1. WHEN will my facility be counted?

### Transitory Locations Operation Schedule

Feb | Mar | Apr | May | June

Participate in TLAC: Feb. 24, 2020 to March 21, 2020

Census Day: April 1, 2020

Participate in ETL: April 9, 2020 to May 4, 2020

— Expect a call/visit from Census staff to determine an enumeration method and any unique needs of your Transitory Location.

2/24/2020 – 3/21/2020

— Census Day – Kicks-off the national campaign to ensure everyone is counted only once and in the right place.

4/1/2020

— You can expect your Transitory Location to be enumerated during this time frame.

4/9/2020 – 5/4/2020

## 2. HOW will my facility be counted? \*

### In-Person Interview/Personal Visit

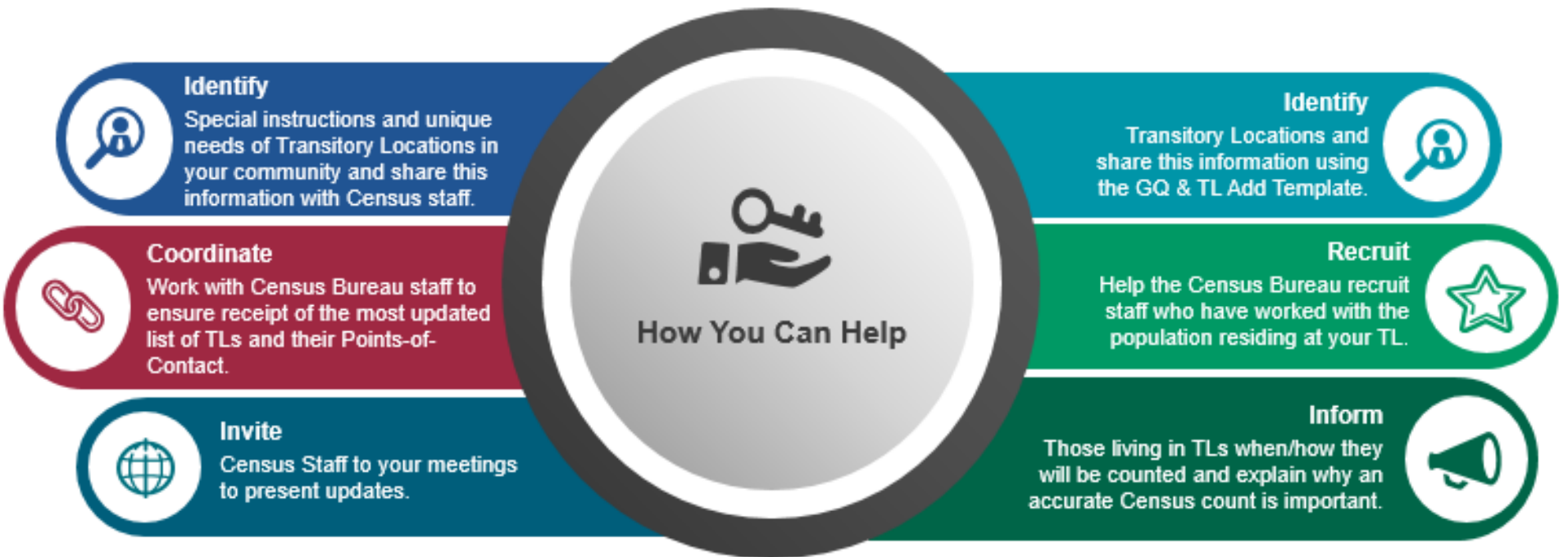
**\*NOTE:** Examples of Transitory Locations include, but are not limited to: Campgrounds, Recreational Vehicle (RV) Parks, Marinas, Hotels/Motels, Racetracks, & Circus/Carnivals.

Shape  
your future  
START HERE >

United States<sup>®</sup>  
Census  
2020

# Transitory Locations

## 3. WHAT can I do to help?



## 4. WHO can I contact?

Please submit questions and requests for the GQ & TL Add Template to:

**Adley Kloth, Area Manager**

LA RCC GQ ETL OPS

Email: [larccgqetlops@uscensus.onmicrosoft.com](mailto:larccgqetlops@uscensus.onmicrosoft.com)

Shape  
your future  
START HERE >

United States<sup>®</sup>  
**Census**  
2020