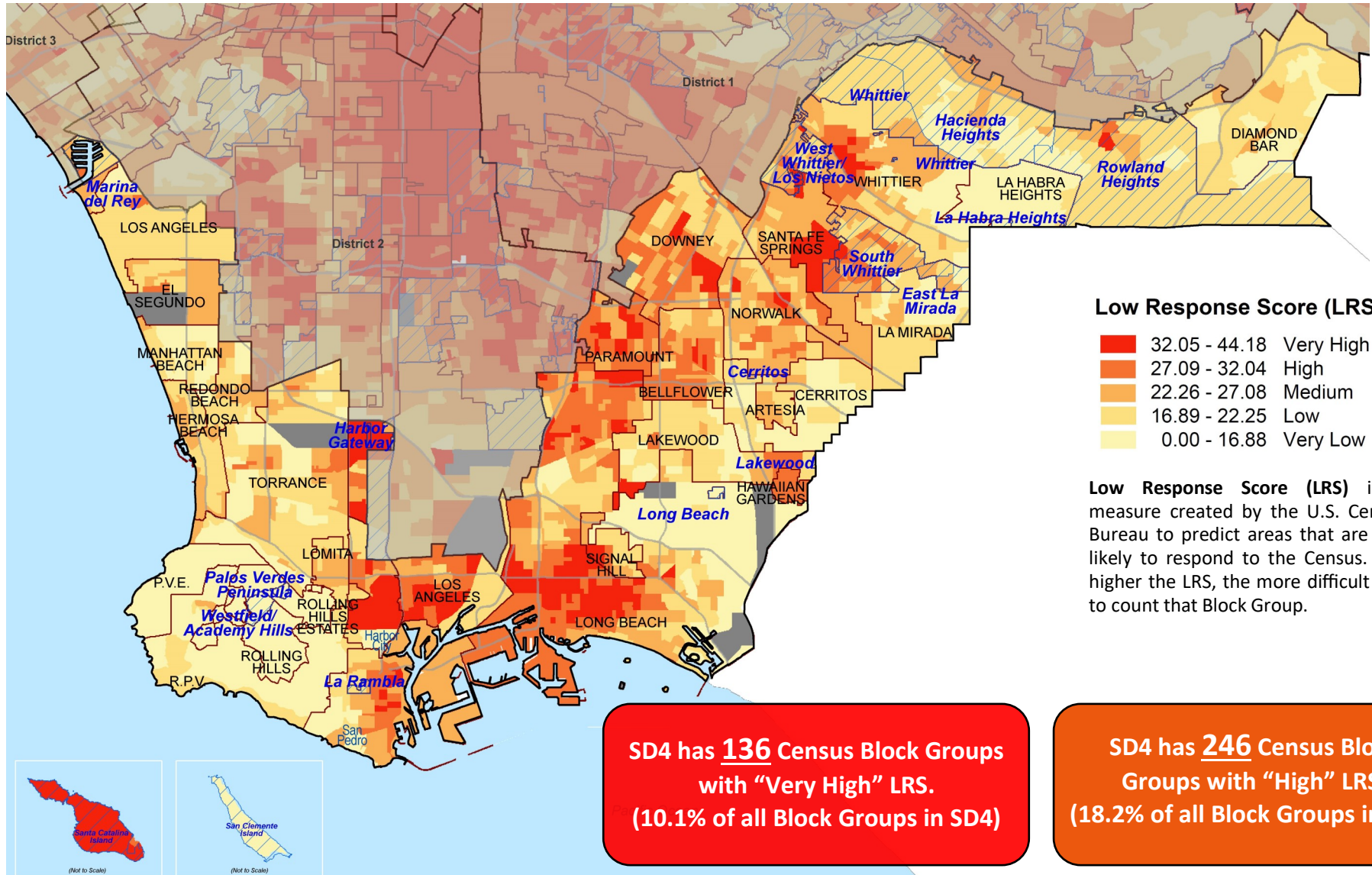




COUNTY OF LOS ANGELES

2020 CENSUS

Fourth Supervisorial District



2020 CENSUS

Demographic Profile: Fourth District

SD4 Quick Facts

- In SD4, approximately **246,616** people live in “Very High” LRS Block Groups and **417,468** live in “High” LRS Block Groups, for a total of **664,084** people (**32.9%**) living in Hard-to-Survey Block Groups.
- SD4 has **9** “Very High” and **16** “High” LRS Block Groups in unincorporated areas.
- The SD4 cities and unincorporated communities with the highest number of Hard-to-Survey Census Block Groups (“Very High” or “High” LRS) are: Long Beach (**155**), Los Angeles (**66**), Downey (**29**), Paramount (**26**), and Bellflower (**24**).
- In SD4 Block Groups with “Very High” LRS, the average percentage of Non-High School Graduates was **39.3%** (vs. 17.7% Districtwide), Renters was **84.1%** (vs. 42.5% Districtwide), Below Poverty Level was **33.7%** (vs. 12.8% Districtwide), Population with No Health Insurance was **28.1%** (vs. 15.8% Districtwide), and Limited English (Ages 14+) was **16.6%** (vs. 9.1% Districtwide).
- Compared to the other Supervisorial Districts, SD4 has the highest average percentage of Native Hawaiian/Pacific Islanders and American Indian/Alaska Natives.

The U.S. Census Bureau provides Block Group data on selected variables to provide socioeconomic and demographic characteristic profiles of areas. The following figures are averages of the Census Block Groups in the Fourth District:

Median Household Income	\$74,715	Not High School Graduate	17.7%
Asian	15.2%	Renter Occupied Housing Units	42.5%
Hispanic	43.2%	Vacant Housing Units	5.5%
White (Non-Hispanic)	32.3%	Limited English Ages 14+	9.1%
Black (Non-Hispanic)	5.7%	Population Ages 18-24	9.7%
Native Hawaiian or Other Pacific Islander	0.45%	Population Ages 65+	12.5%
American Indian or Alaska Native	0.25%	Family Occupied Housing Units with Related Child Under Age 6	21.6%
Below Poverty Level	12.8%	Multi-Unit (10+) Housing	16.0%
Single-Unit Housing Structure	68.6%	Population Ages 5-17	17.1%
Population with No Health Insurance	15.8%	Moved From Another Residence Within the Last Year	12.6%

Source: U.S. Census Bureau 2016 Planning Database

Cities and Unincorporated Communities in SD4 with Census Block Groups that have “Very High” LRS:

- Avalon
- Bellflower
- Downey
- Lakewood
- Long Beach
- Los Angeles
- Norwalk
- Paramount
- Rowland Heights
- Santa Fe Springs
- Signal Hill
- South Whittier
- Unincorporated Harbor Gateway
- Unincorporated Santa Catalina Island
- West Whittier/Los Nietos

Additional Cities and Unincorporated Communities in SD4 with Census Block Groups that have “High” LRS:

- El Segundo
- Hawaiian Gardens
- Marina del Rey
- Torrance

Impact of the Census

MONEY: California receives billions of dollars annually from Federal programs that use Census-derived data to determine funding allocations for health and human services, housing, nutrition, workforce development, transportation, and other services.

REPRESENTATION: After the 2010 Census, California failed to gain a Congressional seat for the first time since obtaining statehood in 1850.